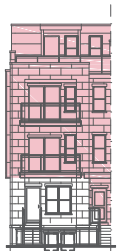


THE ROOFTOP TOWNS

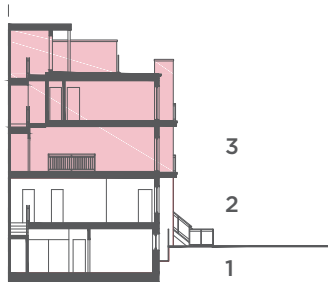
THE VISTA - B

TWO BEDROOM
1,790 SQ. FT.

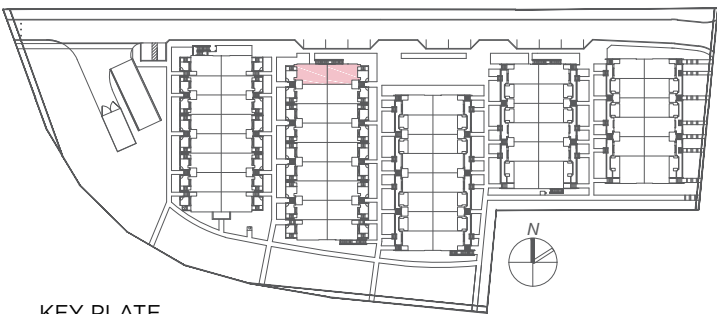
INCLUDES 1,453 SQ. FT. OF INDOOR LIVING SPACE
PLUS 337 SQ. FT. OF OUTDOOR LIVING SPACE



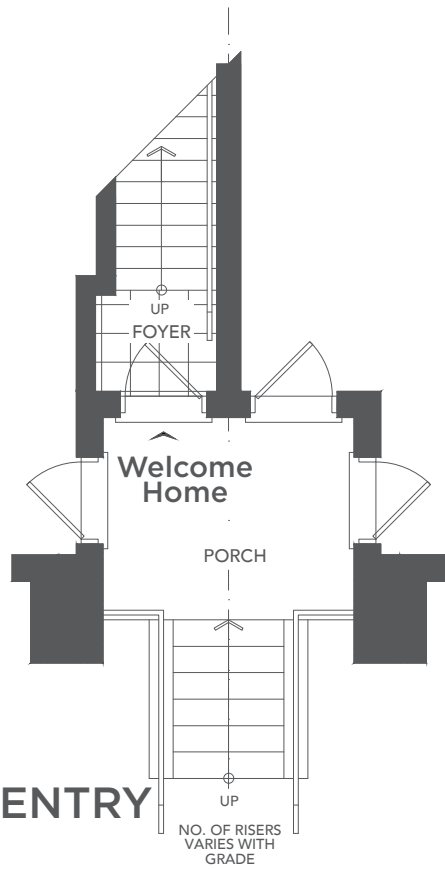
MODULE M1-BE -
FRONT
ELEVATION



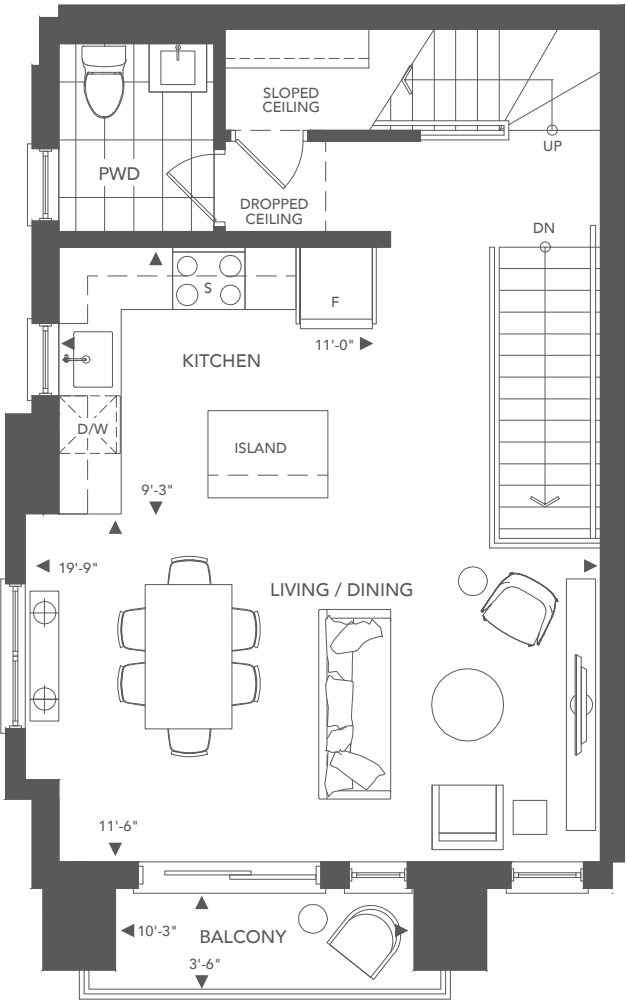
BLOCK 1 & 2 -
TYP. SECTION



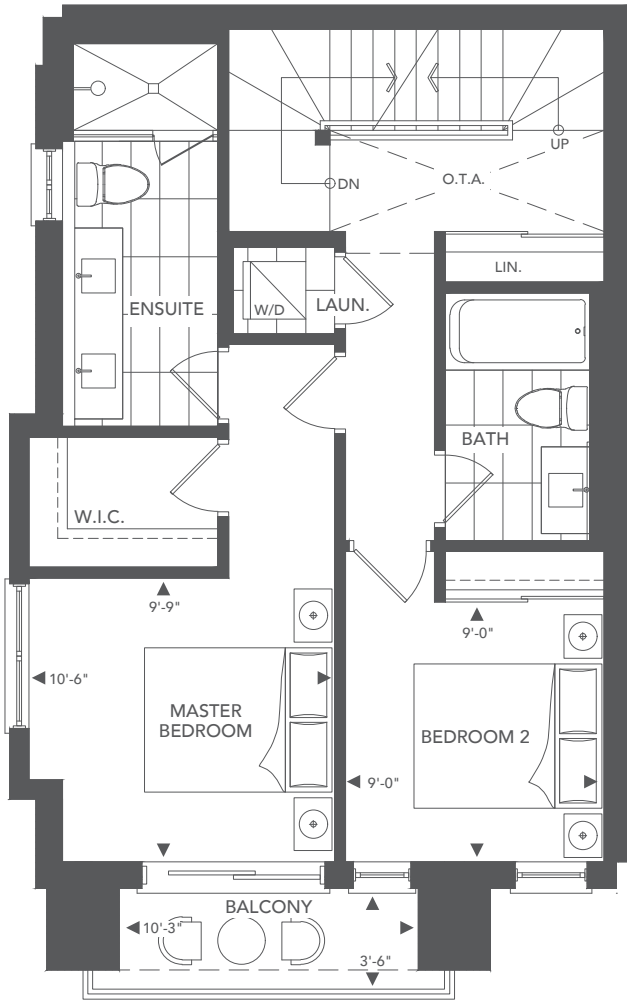
KEY PLATE



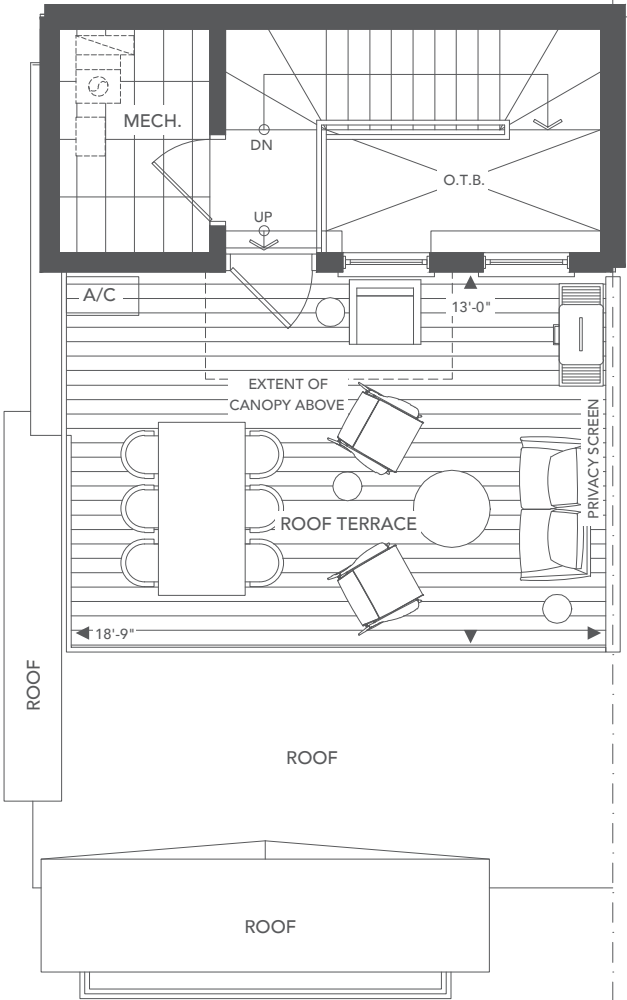
ENTRY



MAIN LEVEL



UPPER LEVEL



ROOFTOP TERRACE